

Enclosed Discharge Safety Relief Valves

Seetru Limited

for Liquid

hygienic

Type 6LO

Clean Service/Hygienic Safety valves with Stainless Steel body <
Enclosed discharge valve with Tri-Clamp inlet connections <

Safety valve for food industry & other hygienic applications

Example Applications

- Liquid storage
- Food production plants
- Hygienic applications
- Pressure vessels

Specifications

- Inlet connections: 1/2" to 1" Tri-Clamp (depending on bore size)
- Temperature: -15°C to +200°C (depending on seal material)
- Pressure range: 0.7 to 30.0 bar (depending on bore size)

Materials of Construction

Component	Material	Grade
Inlet	Stainless Steel	1.4404 (316)
Body	Stainless Steel	1.4408 (316)
Internal parts	Stainless Steel	1.4401 (316)
Spring	Stainless Steel	1.4310 (302)

SURFACE FINISH

Process Contact Surface

In accordance with ASME BPE-2005 Table SF-5.
Surface designation Ra Max 15 µinches, 0.4 µm, Electropolished.

Other Surfaces

Not greater than 60 µinches, 1.5 µm.

Approvals

- Designed in accordance with BS EN ISO-4126-1 & -7
- PED 2014/68/EU (CE)
- PE(S)R UK SI 2016 No. 1105 (UKCA)

CE UK EAC

Seal Materials

Seal Material	Temperature Range
Perfluoroelastomer (FFKM)	-15°C to +200°C

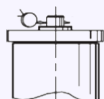
Standard seal materials shown, others are available.
Elastomer soft sealing specifically developed for food & pharmaceutical industries.

Compliant to:

1. FDA 21 CFR 177.2600
2. United States Pharmacopoeia (USP) Class VI
3. SP3A Sanitary Standards for Multiple Use Rubber Dairy Equipment No 18-03.

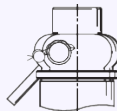
Easing Gear / Lifting Gear Options

- **Standard option:**



Sealed Cap (gas tight cap)

- **Other Options:**



Sealed lever (gas tight)

Technical information by bore size

Bore size	9.5mm (6L010)		13.7mm (6L013)	
Inlet Size	1/2"	3/4"	3/4"	1"
Outlet Size	3/4"		1"	
Flow Area	70.9mm²		147.7mm²	
H - Height (Sealed cap version)	120mm		165mm	
TÜV allotted outflow coefficient	0.59		0.57	
Weight (approximate) Kg	0.9		1.3	
Set Pressure range - PED (CE) bar	0.76 to 30.0		0.7 to 27.0	
Relieving pressure/fully open pressure	Set pressure +25%			
Reseating pressure	Set pressure max -20% down to 3 bar (Below 3 bar = 0.6 bar)			

Stable operation on flows down to 50% of valve rated capacity.

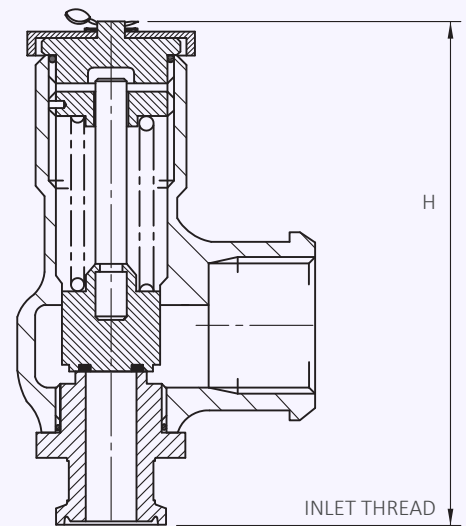
Standard Thread Connection Types

- Tri-Clamp® compatible generally in accordance with ASME BPE 2005 & BS 4825-3.

Standard Outlet Connection Types

- BSP Female Pipe threads (G)

Valve drawing



Valve Selection Guide

Approval Required	Valve type	Select Bore	Inlet Size	Easing Gear	Seal Material
PED (CE)	6L0	Select bore size from above table	Select inlet size from above table	Select easing gear/top fitting	Perfluoroelastomer (FFKM)
					Other

EAC marking available upon request


***Please send your selected details to Seetru and we can provide the full ordering code, price and lead-time.**

Example of Valve Selection Process

Example Selection	PED (CE)	6L0	9.5mm	1/2"	Sealed Cap	Perfluoroelastomer (FFKM)	3.5 bar
	Approval	Valve Type	Bore Size	Inlet Size	Easing Gear	Seal	Set Pressure

Capacity Table - In accordance with ISO 4126, Water at 15°C - kg/hour Type 6L0



Set Pressure 		Bore Size (D0)	
		9.5mm (6L010)	13.7mm (6L013)
bar	psi	kg/hour	kg/hour
0.7	10.15		4001
0.76	11.02	2075	4169
1	14.5	2380	4782
2	29	3367	6759
3	43.5	4123	8284
4	58	4761	9560
5	72.5	5323	10694
6	87	5831	11708
7	101.5	6298	12654
8	116	6733	13519
9	130.5	7141	14348
10	145	7528	15116
15	217.5	9219	18523
20	290	10650	21376
22	319	11170	22419
25	362.5	11902	23914
27	391.5	12369	24837
30	435	13040	

For any intermediate pressures/flows please contact Seetru